

# XLVI

COFFEE MACHINES



#### **XLVI COFFEE MACHINE**

We are engineers, craftsmen, dreamers.

We believe in the quality of every single detail and in teamwork. We have been working with coffee processing products for a lifetime, a beverage that over the years has become a true philosophy, a reason for research and improvement.

Thus, we decided to pass on our knowledge and put it at the service of those working behind the counter, allowing them to express themselves with freedom and creativity, and serve excellent, unique products.

# 55 Volante

With the **55 Volante**, we aim to provide baristas with the widest range of tools **to customize and control their work**. Independent saturated groups allow for the setting of different temperatures. The independent steam boilers also allow for different pressure range. The steam wand, **equipped with a temperature probe and timer, gives baristas full control** over milk frothing. With the 55 Volante, simplicity has reached a whole new level: all procedures, whether routine or **extraordinary maintenance** can be performed from the **front of the machine**, halving intervention times. **The materials used and their sturdiness make it a truly unique machine.**



55 Volante custom model: RAL green coating, XLVI gold group covers, filterholder handle in leather, chrome-plated display cover, chrome-plated steam knobs, chrome-plated button panel covers, and chrome-plated drip trays.

## Technology and performance

- Multiboiler / Multisteam
- PID heating system
- XLVI Smooth Flow extraction
- XLVI Steaming Plus (electronic steam dispensing)
- Auto Steam Off
- Mechanical and electronic pre-infusion (adjustable)
- U Can Touch wand
- Energy saving
- Volumetric dosing

## User experience

- Coffe extraction timer and steam wand
- mL counter
- Easy Use Keyboard
- Automatic washing
- TFT touch display
- Adjustable water temperature
- Led lights
- Adjustable drip tray
- Auto maintenance, filter, and cleaning reminder
- Customizable machine (see page 4)

**XLVI**  
COFFEE MACHINES

## Technical features

	2 groups	3 groups
Net weight (gross weight)	92 Kg (113 Kg)	106 Kg (127 Kg)
Dimensions (l x h x p)	76 x 60 x 62 cm	96 x 60 x 62 cm
Dimensions (packaging)	102 x 67 x 72 cm	102 x 67 x 72 cm
Steam boiler capacity	4,5 + 4,5 l	4,5 + 4,5 l
Service boiler capacity	3,5 l	3,5 l
Filterholder Ø	58 mm	58 mm
Power	5000 W	6000 W
Frequency	50-60 Hz	50-60 Hz
Voltage	220-240 V / 380-415 V 3N	
Technology	Saturated group brass 7,5 Kg	
Pump	External rotary pump 200 l/h	

## Product

	2 groups	3 groups
Item code	art. 1150005	art. 1150006
<b>Price</b>	<b>€ 15.590,00</b>	<b>€ 16.870,00</b>

## Equipment

\*other filterholder combinations available upon request

2 groups machine	3 groups machine
N. 1 XLVI bag	N. 1 XLVI bag
N. 1 Filterholder 1-cup	N. 2 Filterholder 1-cup
N. 2 Filterholder 2-cup	N. 2 Filterholder 2-cup
N. 1 Blind filter	N. 1 Blind filter

## Customizations / Accessories\* 55 Volante (see customization price list)

### Body (coating and coverings)

Powder coating black / white	€ 790,00
Powder coating in all colors (RAL)	€ 1.537,00
Total powder coating black / white	€ 1.329,00
Total powder coating in all colors (RAL)	€ 2.583,00
Anodized aluminium sides colored / golden / copper / chromed	€ 490,00
Wooden sides cover walnut / oak / olive	€ 1.117,00
Glass cover (sides and back)	€ 980,00

### Extraction groups

XLVI group covering copper color	cad. € 149,00
XLVI group covering golden color	cad. € 209,00
XLVI group covering powder coating white / black	cad. € 114,00
XLVI group covering powder coating in all colors (RAL)	cad. € 175,00

### Filterholders

Wooden handle filterholder walnut / oak / olive	cad. € 76,00
Leather handle filterholder	cad. € 125,00
Copper-coated filterholder body + spout (single / double)	cad. € 51,00
Gold-coated filterholder body + spout (single / double)	cad. € 87,00
Steel filterholder body + spout (single / double)	cad. € 87,00

### Steam wheel

Steam wheel 55 Volante in anodized aluminum colored	cad. € 117,00
Steam wheel 55 Volante in anodized aluminum golden / copper / chromed	cad. € 164,00

### Ring keyboard and display

Anodized touch display cover colored	cad. € 21,00
Anodized touch display cover golden / copper / chromed	cad. € 57,00
Ring keyboard in anodized aluminium colored / golden / copper / chromed	cad. € 96,00

### Accessories

Wi-Fi: configuring and controlling the machine from your smartphone	€ 350,00
---------------------------------------------------------------------	----------

\* Prices refer to customizations requested at the time of the order

\* Prices are to be added to the base machine price



# STH9 2/3 gruppi

**STH9 2/3 groups**, equipped with Multiboiler technology combined with high-level electronics, allows for the setting of **different temperatures** while ensuring exceptional thermal stability and **energy efficiency**. **Recommended for intensive use**. Available in two versions, with 2 or 3 brewing groups. The materials used are the best on the market, ensuring **solidity and reliability** on par with our products designed for the professional market.



STH9 2/3 gruppi standard model

## Technology and performance

- Multiboiler
- PID heating system
- XLVI Smooth Flow extraction
- XLVI Steaming (3 nozzle options, 1 - 1,2 - 1,5mm)
- Pressure profile kit (accessory) adjustable (0-12 bar)
- Mechanical and electronic pre-infusion (adjustable)
- U Can Touch wand
- Energy saving
- Volumetric dosing
- Tea Software

## User experience

- Coffee extraction timer
- mL counter
- Easy Use Keyboard
- Automatic washing
- TFT touch display
- Adjustable water temperature
- Auto maintenance, filter, and cleaning reminder
- Customizable machine (see page 6)

**XLVI**  
COFFEE MACHINES

## Technical features

	2 groups	3 groups
Net weight (gross weight)	68 Kg (110 Kg)	103 Kg (127 Kg)
Dimensions (l x h x p)	73 x 55 x 55 cm	96 x 60 x 62 cm
Dimensions (packaging)	82 x 72 x 67 cm	102 x 72 x 67 cm
Service boiler capacity	14 l	21 l
Filterholder Ø	58 mm	58 mm
Power	5700 W	7200 W
Modello P Power	6200 W	8200 W
Frequency	50-60 Hz	50-60 Hz
Voltage	220-240 V / 380-415 V 3N	
Technology	Saturated group brass 7,5 Kg	
Pump	External rotary pump 200 l/h	

## Product

	2 groups	3 groups
Item code	art. 1100011	art. 1100012
<b>Price</b>	<b>€ 9.724,00</b>	<b>€ 11.241,00</b>

## Equipment

\*other filterholder combinations available upon request

2 groups machine	3 groups machine
N. 1 XLVI bag	N. 1 XLVI bag
N. 1 Filterholder 1-cup	N. 2 Filterholder 1-cup
N. 2 Filterholder 2-cup	N. 2 Filterholder 2-cup
N. 1 Blind filter	N. 1 Blind filter

## Customizations / Accessories\* STH9 2/3 groups (see customization price list)

### Body (coating and coverings)

Powder coating black / white	€ 790,00
Powder coating in all colors (RAL)	€ 1.537,00
Total powder coating black / white	€ 1.329,00
Total powder coating in all colors (RAL)	€ 2.583,00
Machine cover in leather	€ 1.600,00
Rear wooden strip walnut / oak / olive	€ 400,00
Rear glass casing	€ 800,00
Boiler power coated in all color (RAL)	€ 294,00

### Extraction groups

XLVI group covering copper color	cad. € 149,00
XLVI group covering golden color	cad. € 209,00
XLVI group covering powder coating white / black	cad. € 114,00
XLVI group covering powder coating in all colors (RAL)	cad. € 175,00

### Filterholders

Wooden handle filterholder walnut / oak / olive	cad. € 76,00
Leather handle filterholder	cad. € 125,00
Copper-coated filterholder body + spout (single / double)	cad. € 51,00
Gold-coated filterholder body + spout (single / double)	cad. € 87,00
Steel filterholder body + spout (single / double)	cad. € 87,00

### Steam wheel

Steam wheel STH9 in anodized aluminum colored	cad. € 117,00
Steam wheel STH9 in anodized aluminum golden / copper / chromed	cad. € 280,00

### Ring keyboard and display

Anodized touch display cover colored	cad. € 21,00
Anodized touch display cover golden / copper / chromed	cad. € 57,00
Wooden ring keyboard walnut / oak / olive	cad. € 65,00
Anodized aluminium ring keyboard colored / golden / copper / chromed	cad. € 48,00
Ring keyboard in leather	cad. € 45,00
Anodized OLED cover colored / golden / copper / chromed	cad. € 29,00

### Accessories

Wi-Fi: configuring and controlling the machine from your smartphone	€ 350,00
LED lights (rear and frontal)	€ 365,00
Colored LED lights you can choose by remote control	€ 549,00
Filter coffee module	€ 1.250,00
Cup warmer kit	€ 105,00
Kit pressure profile 2 groups	€ 1.900,00
Kit pressure profile 3 groups	€ 2.900,00

### Logo

Customized logo on the boiler	€ 267,00
Customized logo	prezzo variabile

\* Prices refer to customizations requested at the time of the order

\* Prices are to be added to the base machine price

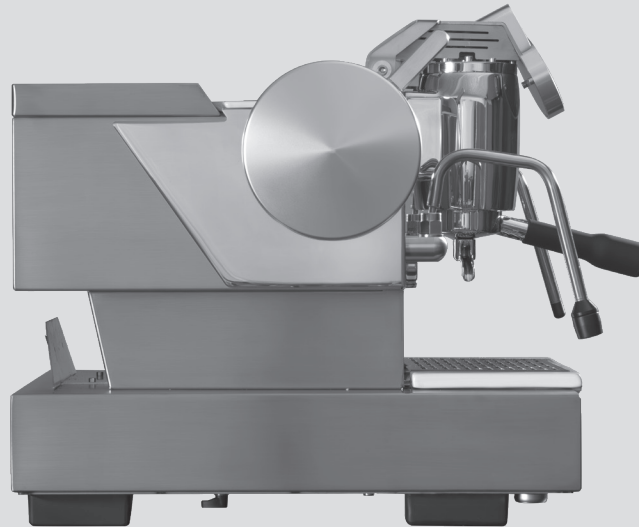
# STH9 1 gruppo

The **STH9 1-group** is a **professional** yet **compact machine**. With **dual-boiler technology** and advanced electronics, it offers **precise temperature control** for excellent **thermal stability** and **energy efficiency**.

Made with high-quality materials, it **delivers durability and reliability**, meeting professional standards of the XLVI product range.



STH9 1 gruppo standard model



## Technology and performance

- Multiboiler
- PID heating system
- XLVI Smooth Flow extraction
- XLVI Steaming (3 nozzle options, 1 - 1,2 - 1,5mm)
- Drain kit (accessory)
- Mechanical and electronic pre-infusion (adjustable)
- U Can Touch wand
- Energy saving
- Dual water connection, tank or direct plumbing
- Dual heating option
- Volumetric dosing

## User experience

- Coffee extraction timer
- Easy Use Keyboard
- Automatic washing
- OLED Display
- Water tank, drip tray and cup warmer in ceramic or stainless steel
- Auto cleaning reminder
- Customizable machine (see page 8)

**XLVI**  
COFFEE MACHINES

## Technical features

	1 group
Net weight (gross weight)	41 Kg (59 Kg)
Dimensions (l x h x p)	40 x 45 x 50 cm
Dimensions (packaging)	57 x 47 x 63 cm
Service boiler capacity	3 l
Filterholder Ø	58 mm
Power (alternate mode)	1400 W
Power (combined mode)	2600 W
Frequency	50-60 Hz
Voltage	220-240 V
Technology	Saturated group brass 7,5 Kg
Pump	Int. rotary pump 100 l/h

## Product

Item code	art. 1100010
<b>Price</b>	<b>€ 4.499,00</b>

## Equipment

\*other filterholder combinations available upon request

### 1 group machine

- N. 1 XLVI bag
- N. 1 Filterholder 1-cup
- N. 1 Filterholder 2-cup
- N. 1 Blind filter

## Customizations / Accessories\* STH9 1 group (see customization price list)

### Body (coating and coverings)

Powder coating black / white	€ 474,00
Powder coating in all colors (RAL)	€ 922,00
Total powder coating black / white	€ 760,00
Total powder coating in all colors (RAL)	€ 1.476,00
Rear wooden strip walnut / oak / olive	€ 360,00

### Extraction groups

XLVI group covering copper color	cad. € 149,00
XLVI group covering golden color	cad. € 209,00
XLVI group covering powder coating white / black	cad. € 114,00
XLVI group covering powder coating in all colors (RAL)	cad. € 175,00

### Filterholders

Wooden handle filterholder walnut / oak / olive	cad. € 76,00
Leather handle filterholder	cad. € 125,00
Copper-coated filterholder body + spout (single / double)	cad. € 51,00
Gold-coated filterholder body + spout (single / double)	cad. € 87,00
Steel filterholder body + spout (single / double)	cad. € 87,00

### Steam wheel

Steam wheel STH9 in anodized aluminum colored	cad. € 117,00
Steam wheel STH9 in anodized aluminum golden / copper / chromed	cad. € 280,00

### Ring keyboard and display

Wooden ring keyboard walnut / oak / olive	cad. € 65,00
Anodized aluminium ring keyboard colored / golden / copper / chromed	cad. € 48,00
Ring keyboard in leather	cad. € 45,00
Anodized OLED cover colored / golden / copper / chromed	cad. € 29,00

### Accessories

LED lights (rear and frontal)	€ 365,00
Colored LED lights you can choose by remote control	€ 549,00
Water mixer	€ 144,00
Drain kit	€ 139,00

### Logo

Customized logo	prezzo variabile
-----------------	------------------

\* Prices refer to customizations requested at the time of the order

\* Prices are to be added to the base machine price

# Steamhammer Cattiva

The **Steamhammer Cattiva** allows users to **pre-set the amount of water** required for coffee extraction. Recommended for intensive use, it guarantees **reliability even with high workloads**.

Available in 1, 2, or 3 brewing group versions.



**Steamhammer cattiva** custom model: total black coating, filterholder handle, steam wheel, and ring keyboard in walnut wood, XLVI group covers in copper, filterholder body and spout in copper, LED lighting.

## Technology and performance

- PID heating system
- XLVI Smooth Flow extraction
- XLVI Steaming (3 nozzle options, 1 - 1,2 - 1,5mm)
- Mechanical and electronic pre-infusion (adjustable)
- Coffee temperature probe
- U Can Touch wand
- Energy saving
- Tea Software
- Volumetric dosing

## User experience

- Coffee extraction timer
- mL counter
- Easy Use Keyboard
- Reversible grid
- Automatic washing
- TFT touch display
- Advanced electronics
- Auto maintenance, filter, and cleaning reminder
- Customizable machine (see page 12)

## Technical features

	1 group	2 groups	3 groups
Net weight (gross weight)	55 Kg (70 Kg)	66 Kg (95 Kg)	85 Kg (120 Kg)
Dimensions (l x h x p)	49 x 60 x 57 cm	73 x 60 x 57 cm	93 x 60 x 57 cm
Dimensions (packaging)	59 x 72 x 67 cm	82 x 72 x 67 cm	102 x 72 x 67 cm
Service boiler capacity	5,5 l	14 l	21 l
Filterholder Ø	58 mm	58 mm	58 mm
Power	2900 W	3500 W	4500 W
Frequency	50-60 Hz	50-60 Hz	50-60 Hz
Voltage	220-240 V / 380-415 V 3N		
Technology	XLVI designed thermosiphon heat exchanger		
Pump	External rotary pump 200 l/h		

## Product

	1 group	2 groups	3 groups
Item code	art. 1100007	art. 1100008	art. 1100009
<b>Price</b>	<b>€ 6.098,00</b>	<b>€ 7.319,00</b>	<b>€ 8.308,00</b>

## Equipment

\*other filterholder combinations available upon request

1 group machine	2 groups machine	3 groups machine
N. 1 XLVI bag	N. 1 XLVI bag	N. 1 XLVI bag
N. 1 Filterholder 1-cup	N. 1 Filterholder 1-cup	N. 2 Filterholder 1-cup
N. 1 Filterholder 2-cup	N. 2 Filterholder 2-cup	N. 2 Filterholder 2-cup
N. 1 Blind filter	N. 1 Blind filter	N. 1 Blind filter

# Steamhammer Elettronica

The **Steamhammer Elettronica** allows users to **pre-set the amount of water required** for coffee extraction. Recommended for intensive use, it guarantees **reliability even with high workloads**. Available in 1, 2, or 3 brewing group versions.



Steamhammer elettronica custom model: black coating, filterholder handle, steam wheel and ring keyboard in walnut wood, LED lighting.

## Technology and performance

- PID heating system
- XLVI Smooth Flow extraction
- XLVI Steaming (3 nozzle options, 1 - 1,2 - 1,5mm)
- Mechanical and electronic pre-infusion (adjustable)
- U Can Touch wand
- Energy saving
- Volumetric dosing

## User experience

- Coffee extraction timer
- Easy Use Keyboard
- Automatic washing
- Reversible grid
- LCD Display
- Auto maintenance, filter, and cleaning reminder
- Customizable machine (see page 12)

## Technical features

	1 group	2 groups	3 groups
Net weight (gross weight)	55 Kg (70 Kg)	66 Kg (95 Kg)	85 Kg (120 Kg)
Dimensions (l x h x p)	49 x 60 x 57 cm	73 x 60 x 57 cm	93 x 60 x 57 cm
Dimensions (packaging)	59 x 72 x 67 cm	82 x 72 x 67 cm	102 x 72 x 67 cm
Service boiler capacity	5,5 l	14 l	21 l
Filterholder Ø	58 mm	58 mm	58 mm
Power	2900 W	3500 W	4500 W
Frequency	50-60 Hz	50-60 Hz	50-60 Hz
Voltage	220-240 V / 380-415 V 3N		
Technology	XLVI designed thermosiphon heat exchanger		
Pump	External rotary pump 200 l/h		

## Product

	1 group	2 groups	3 groups
Item code	art. 1100004	art. 1100005	art. 1100006
<b>Price</b>	<b>€ 5.144,00</b>	<b>€ 6.434,00</b>	<b>€ 7.486,00</b>

## Equipment

\*other filterholder combinations available upon request

1 group machine	2 groups machine	3 groups machine
N. 1 XLVI bag	N. 1 XLVI bag	N. 1 XLVI bag
N. 1 Filterholder 1-cup	N. 1 Filterholder 1-cup	N. 2 Filterholder 1-cup
N. 1 Filterholder 2-cup	N. 2 Filterholder 2-cup	N. 2 Filterholder 2-cup
N. 1 Blind filter	N. 1 Blind filter	N. 1 Blind filter



# Steamhammer Leva

The **Steamhammer Leva**, a traditional coffee machine, has been loved and **appreciated** for generations due to its **simplicity and quality**.

The presence of the **manual group** ensures **reliability** and delivers **excellent performance**.



## Technology and performance

- XLVI Smooth Flow extraction
- XLVI Steaming (3 nozzle option, 1 - 1,2 - 1,5mm)
- Reversible grid
- Mechanical pre-infusion
- U Can Touch wand
- Customizable machine (see page 12)

**XLVI**  
COFFEE MACHINES

## Technical features

	1 group	2 groups	3 groups
Net weight (gross weight)	55 Kg (70 Kg)	66 Kg (95 Kg)	85 Kg (120 Kg)
Dimensions (l x h x p)	49 x 60 x 57 cm	73 x 60 x 57 cm	93 x 60 x 57 cm
Dimensions (packaging)	59 x 72 x 67 cm	82 x 72 x 67 cm	102 x 72 x 67 cm
Service boiler capacity	5,5 l	14 l	21 l
Filterholder Ø	58 mm	58 mm	58 mm
Power	2900 W	3500 W	4500 W
Frequency	50-60 Hz	50-60 Hz	50-60 Hz
Voltage	220-240 V / 380-415 V 3N		
Technology	XLVI designed thermosiphon heat exchanger		
Pump	External rotary pump 200 l/h		

## Product

	1 group	2 groups	3 groups
Item code	art. 1100001	art. 1100002	art. 1100003
<b>Price</b>	<b>€ 4.084,00</b>	<b>€ 5.202,00</b>	<b>€ 6.000,00</b>

## Equipment

\*other filterholder combinations available upon request

1 group machine	2 groups machine	3 groups machine
N. 1 XLVI bag	N. 1 XLVI bag	N. 1 XLVI bag
N. 1 Filterholder 1-cup	N. 1 Filterholder 1-cup	N. 2 Filterholder 1-cup
N. 1 Filterholder 2-cup	N. 2 Filterholder 2-cup	N. 2 Filterholder 2-cup
N. 1 Blind filter	N. 1 Blind filter	N. 1 Blind filter

## Customizations / Accessories\* Steamhammer (see customization price list)

Body (coating and coverings)	
Power coating (body without front panel) black / white	€ 590,00
Power coating (body without front panel) in all colors (RAL)	€ 852,00
Total powder coating black / white	€ 748,00
Total powder coating in all colors (RAL)	€ 948,00
Machine cover in leather	€ 1.600,00
Rear wooden strip walnut / oak / olive	€ 400,00
Rear glass casing	€ 800,00
Boiler power coated in all color (RAL)	€ 294,00
Extraction groups	
XLVI group covering copper color	cad. € 122,00
XLVI group covering golden color	cad. € 206,00
XLVI group covering powder coating white / black	cad. € 112,00
XLVI group covering powder coating in all colors (RAL)	cad. € 175,00
Filterholders	
Wooden handle filterholder walnut / oak / olive	cad. € 76,00
Leather handle filterholder	cad. € 125,00
Copper-coated filterholder body + spout (single / double)	cad. € 51,00
Gold-coated filterholder body + spout (single / double)	cad. € 87,00
Steel filterholder body + spout (single / double)	cad. € 87,00
Logo	
Customized logo on the boiler	€ 267,00
Wooden Logo XLVI / Steamhammer	cad. € 75,00
Customized logo	variable price

Steam wheel	
Anodized aluminium steam wheel + handle	cad. € 256,00
Anodized aluminium steam wheel + handle colored / golden / copper / chromed	cad. € 338,00
Wooden steam wheel + handle walnut / oak	cad. € 228,00
Wooden steam wheel + handle olive	cad. € 298,00
Powder coating steam wheel + handle white / black	cad. € 110,00
Powder coating steam wheel + handle in all colors (RAL)	cad. € 164,00
Ring keyboard and display	
Anodized touch display cover colored	cad. € 21,00
Anodized touch display cover golden / copper / chromed	cad. € 57,00
Wooden ring keyboard walnut / oak / olive	cad. € 65,00
Ring keyboard in anodized aluminium colored / golden / copper / chromed	cad. € 48,00
Ring keyboard in leather	cad. € 45,00
Accessories	
Wi-Fi: configuring and controlling the machine from your smartphone	€ 350,00
LED lights (rear and frontal)	€ 365,00
Colored LED lights you can choose by remote control	€ 549,00
Water mixer	€ 144,00
Filter coffee module	€ 1.250,00
Elevation for espresso 5,5 cm to match with the flat grill	€ 97,00
Elevation for espresso 7,5 cm to match with the flat grill	€ 103,00
Cup warmer kit	€ 105,00

\* Prices refer to customizations requested at the time of the order

\* Prices are to be added to the base machine price

# Indipendente

The **Indipendente** is an espresso extraction tool with **all its essential technology built directly into the machine**, eliminating the need for under-counter components.

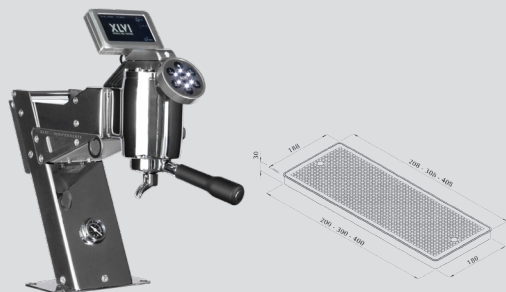
The ability to **adjust pressure, flow, and temperature** allows baristas to fully **customize the extraction**, delivering a unique and exclusive cup.

## Technology and performance

- PID heating system
- XLVI Smooth Flow extraction
- Mechanical and electronic pre-infusion (adjustable)
- Energy saving
- Pressure profile kit (accessory)
- Tea Software
- Volumetric dosing

## User experience

- Coffee extraction timer
- mL counter
- Easy Use Keyboard
- Automatic washing
- TFT Touch Display
- Available in small base model and flat grid
- Auto maintenance, filter, and cleaning reminder
- Customizable machine (see page 14)



Indipendente standard model, small base. Flat grid.



Indipendente standard model, large base

**XLVI**  
COFFEE MACHINES

## Technical features

Net weight (gross weight)	21 Kg (44 Kg)
Dimensions (l x h x p)	25 x 45 x 55 cm
Dimensions (packaging)	73 x 69 x 62 cm
Production capacity	ciclo continuo
Pressure range	0-12 bar
Water flow	0-1,5 lt/min
Filterholder Ø	58 mm
Power	1300 W
Frequency	50-60 Hz
Voltage	220-240 V
Technology	Saturated group brass 7,5 Kg
Pump	Ext. rotary pump 200 l/h

## Product

Item code	art. 1120001
Price	€ 4.260,00

## Equipment

\*other filterholder combinations available upon request

### 1 group machine

- N. 1 XLVI bag
- N. 1 Filterholder 1-cup
- N. 1 Filterholder 2-cup
- N. 1 Blind filter

## Customizations / Accessories\* Indipendente (see customization price list)

### Body (coating and coverings)

Powder coating black / white	€	256,00
Powder coating in all colors (RAL)	€	447,00
Coating of the ring keyboard white / black	€	45,00
Coating of the ring keyboard in all colors (RAL)	€	62,00
XLVI group top in anodized aluminum colored / golden / copper / chromed	€	26,00
Drip tray in anodized aluminum colored / golden / copper / chromed	€	57,00

### Extraction groups

XLVI group covering copper color	cad. €	122,00
XLVI group covering golden color	cad. €	206,00
XLVI group covering powder coating white / black	cad. €	112,00
XLVI group covering powder coating in all colors (RAL)	cad. €	175,00

### Filterholders

Wooden handle filterholder walnut / oak / olive	cad. €	76,00
Leather handle filterholder	cad. €	125,00
Copper-coated filterholder body + spout (single / double)	cad. €	51,00
Gold-coated filterholder body + spout (single / double)	cad. €	87,00
Steel filterholder body + spout (single / double)	cad. €	87,00

### Accessories

Kit pressure profile	€	1.170,00
Pompa Bassa (Filterholder for low-pressure extraction)	€	585,00
Tea Filterholder	€	144,00

### Ring keyboard and display

Anodized touch display cover colored	cad. €	21,00
Anodized touch display cover golden / copper / chromed	cad. €	57,00
Wooden ring keyboard walnut / oak / olive	cad. €	65,00
Anodized aluminium ring keyboard colored / golden / copper / chromed	cad. €	48,00
Ring keyboard in leather	cad. €	45,00

### Tazza Calda module for Indipendente

1700002	Tazza calda for Indipendente 1 group	€	1.170,00
1700003	Tazza calda for Indipendente 2 groups	€	1.268,00
1700004	Tazza calda for Indipendente 3 groups	€	1.357,00

### Grids

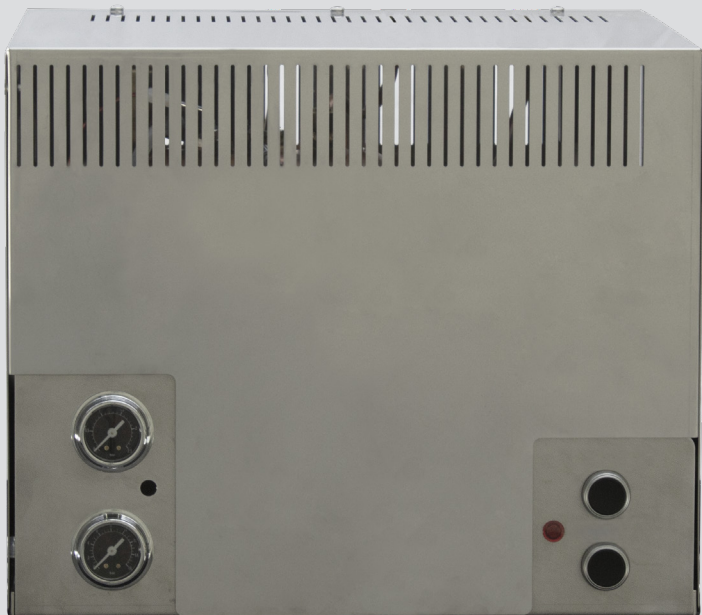
4720010	Flat grid with drain 30 x 18 cm	€	232,00
4720011	Flat grid with drain and spullboy 30 x 18 cm	€	274,00
4720012	Flat grid with drain 40 x 18 cm	€	264,00
4720013	Flat grid with drain and spullboy 40 x 18 cm	€	354,00
4720014	Flat grid with drain 60 x 22 cm	€	367,00
4720015	Flat grid with drain and spullboy 60 x 22 cm	€	436,00
Other sizes available upon request			
Elevation for espresso 5,5 cm to match with the flat grill		€	97,00
Elevation for espresso 7,5 cm to match with the flat grill		€	103,00

\* Prices refer to customizations requested at the time of the order

\* Prices are to be added to the base machine price

# Macchinario sottobanco

Steam and water generator machine, an innovative system for steam generation and water delivery.



## Types of column (see page 17)

Colonna Acqua  
Colonna Vapore

**Each device can be designed to support one or more columns\***

\*the number of columns must be specified at the time of the order, no changes are possible afterwards.

## Maximum number of columns supported

1 Colonna Vapore + 1 Colonna Acqua for  
Macchinario Sottobanco small (1300010)

2 Colonna Vapore + 1 Colonna Acqua for  
Macchinario Sottobanco medium (1300011)

**XLVI**  
COFFEE MACHINES

## Technical features

	small	medium
Net weight	21 Kg	30 Kg
Power	2900 W	3500/4000 W
Voltage	220-240 V	220-240 V
Frequency	50-60 Hz	50-60 Hz
Power outlet	3 poli / 16 A	5 poli / trifase + neutro + terra / 16A
Boiler capacity	5,5 l	14 l
Dimensions (l x h x p)	42 x 45 x 40 cm	62 x 45 x 40 cm

## Product

	small	medium
Item code	art. 1300010	art. 1300011
<b>Price</b>	<b>€ 2.500,00</b>	<b>€ 3.000,00</b>

# Colonna vapore

XLVI Colonna Vapore is a module designed to make steam delivery unique. Its design **optimizes space** and **improves ergonomics**. To operate, it must be connected to the Macchinario sottobanco (sold separately). Customizable (see page 17).



# Colonna acqua

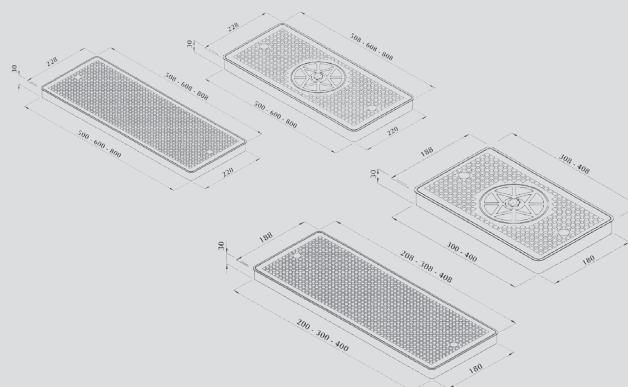
XLVI Colonna Acqua allows the extraction of hot or room temperature water by pressing the appropriate button. **The hot water temperature is adjustable**. To operate, it must be connected to the Macchinario sottobanco (sold separately).



## Built-in grids in stainless steel

\*Accessories sold separately

30 x 18 cm (with drainage)	art 4720010
30 x 18 cm (with spullboy and drainage)	art 4720011
40 x 18 cm (with drainage)	art 4720012
40 x 18 cm (with spullboy and drainage)	art 4720013
60 x 22 cm (with drainage)	art 4720014
60 x 22 cm (with spullboy and drainage)	art 4720015



## Colonna Acqua

art. 1300009	€ 1638,00
--------------	-----------

## Colonna Vapore

art. 1300008 right	€ 2.457,00
art. 1300013 left	€ 2.457,00

## Built-in grids

art. 4720010	€ 232,00
art. 4720011	€ 274,00
art. 4720012	€ 264,00
art. 4720013	€ 354,00
art. 4720014	€ 367,00
art. 4720015	€ 436,00



## Customizations / Accessories\* Colonna Vapore (see customization price list)

### Body (coating and coverings)

Powder coating black / white	€	154,00
Powder coating in all colors (RAL)	€	266,00

### Steam wheel

Anodized aluminium steam wheel + handle	cad.	€	256,00
Anodized aluminium steam wheel + handle colored / golden / copper / chromed	cad.	€	338,00
Wooden steam wheel + handle walnut / oak	cad.	€	228,00
Wooden steam wheel + handle olive	cad.	€	298,00
Powder coating steam wheel + handle white / black	cad.	€	110,00
Powder coating steam wheel + handle in all colors (RAL)	cad.	€	164,00

\* Prices refer to customizations requested at the time of the order

\* Prices are to be added to the base machine price

# K7 2 gruppi

The **K7 2-group** is a compact coffee machine that ensures **efficiency and low energy consumption**. The **multiboiler** technology allows for precise control of the brewing temperature for each individual group.

Available in both **ground coffee** and **ESE pod** versions.



K7 2 groups custom model: side caps of the tank in walnut wood and walnut wood portafilter handles

## Technology and performance

- Multiboiler
- PID heating system
- XLVI Smooth Flow extraction
- XLVI Steaming (3 nozzle option, 1 - 1,2 - 1,5mm)
- Mechanical and electronic pre-infusion (adjustable)
- Dual water connection, tank or direct plumbing
- U Can Touch wand
- Energy saving
- Programmable doses

## User experience

- Coffee extraction timer
- Easy Use keyboard
- Automatic washing
- LCD Display
- Stainless steel body
- Auto. maintenance, filter, and cleaning reminder
- Customizable machine (see page 19)

**XLVI**  
COFFEE MACHINES

## Technical features

Net weight (gross weight)	37,2 Kg (57 Kg)
Dimensions (l x h x p)	61 x 42 x 45 cm
Dimensions (packaging)	67 x 70 x 59 cm
Service boiler capacity	2,3 l
Filterholder Ø	52 mm
Power	2400 W
Frequency	50-60 Hz
Voltage	220-240 V
Technology	Thermoblock
Pump	Vibration

## Product

Item code	art. 1160002
<b>Price</b>	<b>€ 3.900,00</b>

## Equipment

\*other filterholder combinations available upon request

### 2 groups machine

- N. 1 XLVI bag
- N. 2 Filterholder 1-cup

## Customizations / Accessories\* K7 2 groups (see customization price list)

### Body (coating and coverings)

Powder coating black / white	€	329,00
Powder coating in all colors (RAL)	€	490,00
Total powder coating black / white	€	842,00
Total powder coating in all colors (RAL)	€	1.263,00
Treatment body gold / copper	€	835,00
Treatment body chromed	€	250,00
Wood covering walnut / oak	€	350,00

### Ring keyboard and display

Wooden ring keyboard walnut / oak / olive	cad.	€	65,00
Anodized aluminium ring keyboard colored / golden / copper / chromed	cad.	€	48,00
Ring keyboard in leather	cad.	€	45,00

### Filterholders

Wooden handle filterholder walnut / oak / olive	cad.	€	37,00
-------------------------------------------------	------	---	-------

\* Prices refer to customizations requested at the time of the order

\* Prices are to be added to the base machine price

# Azomico

**XLVI**  
COFFEE MACHINES

The **Azotizzatore**, an exclusive and **patented XLVI project**, is an **extraordinary innovative concept—a revolutionary system** designed to ensure the **long-term preservation of roasted coffee beans**.

By adding high-pressure **nitrogen** to the gases and aromas released by the coffee beans, within specially designed containers built to withstand high pressure, **an inverse process to aroma loss is activated**. This way, **the aromas cannot escape from the mass of the bean** and can be preserved for a **longer period**, compared to any other system.

Customizable (see page 21).

## Available models

High base structure  
Low base structure  
Wall-mounted structure  
Custom structure upon request

## Accessories

- 1) XLVI aluminum plate
- 2) Copper tube kit
- 3) Lights kit

## Patented system



\*Nitrogen tank not included



## Azomico

### 1 silo

Item code	art. 1200001
<b>Price</b>	<b>€ 3.996,00</b>
Net weight (gross weight)	42 Kg (66 Kg)
Maximum silo capacity	3,5 Kg a silos
Dimensions (l x h x p)	35 x 160 x 60 cm
Dimensions (packaging 1 plt)	74 x 176 x 60 cm

## Azomico

### 2 silos

Item code	art. 1200002
<b>Price</b>	<b>€ 7.992,00</b>
Net weight (gross weight)	84 Kg (105 Kg)
Maximum silo capacity	3,5 Kg a silos
Dimensions (l x h x p)	70 x 160 x 60 cm
Dimensions (packaging 1 plt)	74 x 176 x 60 cm

## Azomico

### 3 silos

Item code	art. 1200003
<b>Price</b>	<b>€ 11.998,00</b>
Net weight (gross weight)	126 Kg (171 Kg)
Maximum silo capacity	3,5 Kg a silos
Dimensions (l x h x p)	105 x 160 x 60 cm
Dimensions (packaging 2 plt)	74 x 176 x 60 cm

## Azomico

### 4 silos

Item code	art. 1200004
<b>Price</b>	<b>€ 15.984,00</b>
Net weight (gross weight)	168 Kg (210 Kg)
Maximum silo capacity	3,5 Kg a silos
Dimensions (l x h x p)	140 x 160 x 60 cm
Dimensions (packaging 2 plt)	74 x 176 x 60 cm

## Customizations / Accessories\* Azomico (see customization price list)

### Accessories

2800015	Copper tubes kit with plate support (1 silos)	€	475,00
2800016	Copper tubes kit with plate support (2 silos)	€	495,00
2800017	Copper tubes kit with plate support (3 silos)	€	513,00
2800018	Copper tubes kit with plate support (4 silos)	€	534,00
8010007	Targa in alluminio XLVI	€	554,00
8010016	Custom aluminum plate	€	640,00
4510001	Lights kit	€	400,00

### Silos treatment

Coated silos treatment gold / copper / chromed	cad.	€	699,00
Anodized silos treatment black / gold	cad.	€	399,00

### Structure coating

Structure powder coating white / black	€	700,00
Structure powder coating in all colors (RAL)	€	1.200,00

\* Prices refer to customizations requested at the time of the order

\* Prices are to be added to the base machine price

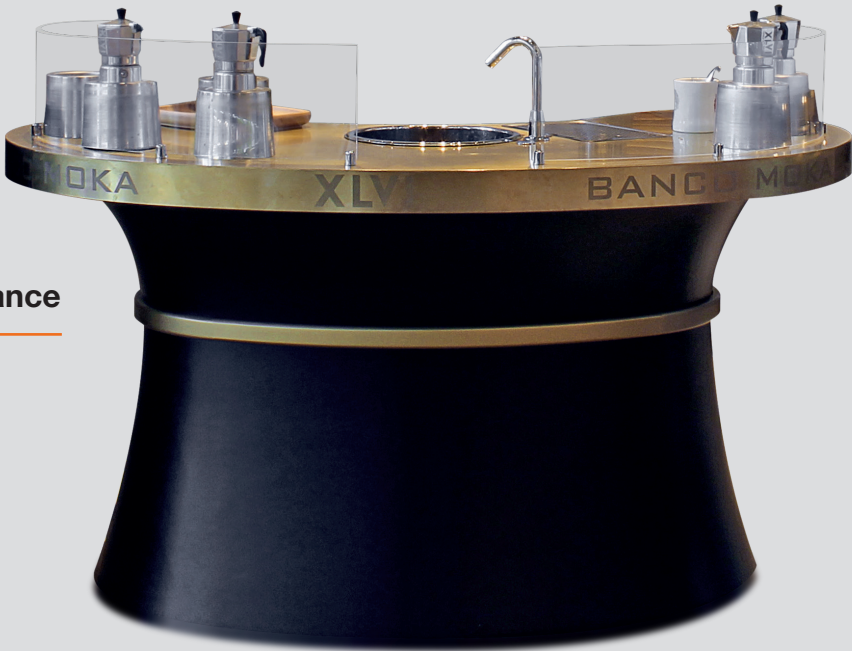
# Banco Moka

**XLVI**  
COFFEE MACHINES

The **Banco Moka** is a **furniture piece** with accessories specifically designed to offer customers a menu of traditional and modern recipes. Our project is simple: to place the **coffee maker at the center**, enhance its value, and make it convenient to use **not only in domestic settings but also in public places** and cafés.

This technology, through a **water filtration system and the perfect conduction** of heat exchange between **water, coffee, and metals**, allows for a clean cup of coffee with more aromas in a short time.

The **XLVI Banco Moka enriches the environment** with typical Italian aromas and sensations, serving objects, tableware, and coffee blends in a context of quality, transporting us to a **place full of history and emotions**.



## Technology and performance

- 7 electric burners (400W each)
- Sink with hot and cold water
- Filter battler
- Drip tray
- Timer control panel
- Macchinario sottobanco
- Electronic safety panel
- Three-phase power supply

## Banco Moka (custom) example 7 burners

Item code	art. 1500001
<b>Price</b>	<b>variable price</b>
Power	4800 W
Voltage	380-400 V
Frequency	50-60 Hz
Dimensions (l x h x p)	l 163,5 h 91,5/111,5 p 100,2 cm

## Accessories

Moka tray	70,00 €
Filter refill tray	75,00 €



# Banco Macchina

**XLVI**  
COFFEE MACHINES

## XL27 Built-in module\*

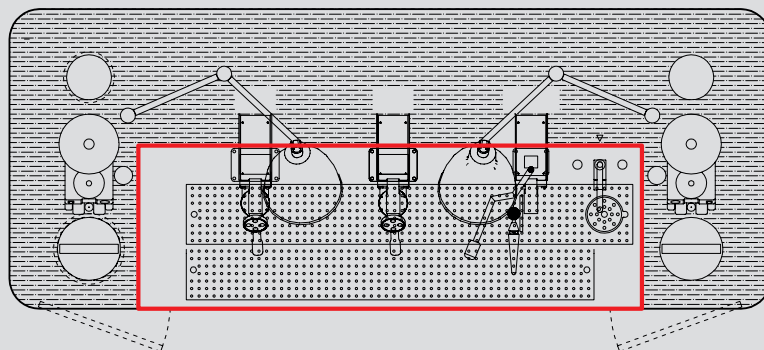
### Designed to support

(the following items are not included):

- 2 coffee groups
- 1 colonna vapore (1300008)
- 1 colonna acqua (1300009)
- Small Macchinario sottobanco (1300010) or medium (1300011)

### Included items:

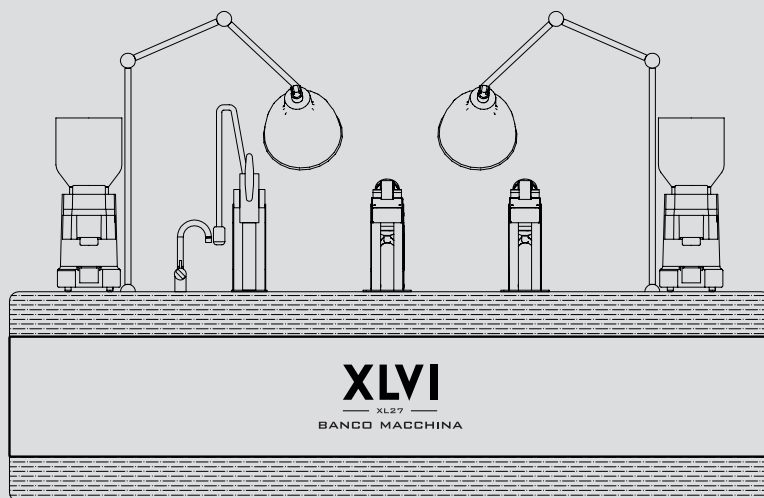
- Drip tray
- Spullboy
- Cup warmer



## Complete Banco Bar with Built-in module

### Included items:

- Built-in module + custom counter
- Lights
- Electrical system
- Filter battler
- Integrated basket



## Banco Macchina XL27 (custom) example

Item code	art. 1300002
<b>Price</b>	<b>€ 10.530,00</b>
Power	5500 W
Voltage	220 - 240 V 380 - 400 V
Frequency	50-60 Hz
Dimensions (l x h x p)	l 254 h 90 + groups p 100 cm

# Metal workstation

**XLVI**  
COFFEE MACHINES

**XLVI Metal Workstation** is a work station with a **tray** for the barista, a **spullboy** for washing milk jugs, a **drip grid**, and a **faucet** for filtered water.



## Metal Workstation

**small - 70 cm**

Item code	art. 1400001
<b>Price</b>	<b>€ 6.000,00</b>
Net weight	113 Kg
Dimensions (l x h x p)	l 70 cm h 81 cm p 54 / 78 cm with tray for barista

## Metal Workstation

**big - 90 cm**

Item code	art. 1400002
<b>Price</b>	<b>€ 6.200,00</b>
Net weight	116 Kg
Dimensions (l x h x p)	l 90 cm h 81 cm p 54 / 78 cm with tray for barista

# Fornello Moka

Electric **Fornello Moka** for extraction with the **Moka**, available in 2 or 4-burner versions. **Control timer** to prevent the burner from staying on unnecessarily.



## Features

Anti-tip and anti-burn protection cones

**XLVI**  
COFFEE MACHINES

## Technical features

	2 burners	4 burners
Net weight	5,8 Kg	10,8 Kg
Power	900 W	1800 W
Voltage	220-240 V	220-240 V
Frequency	50-60 Hz	50-60 Hz
Dimensions (l x h x p)	27 x 19 x 36 cm	46 x 19 x 36 cm

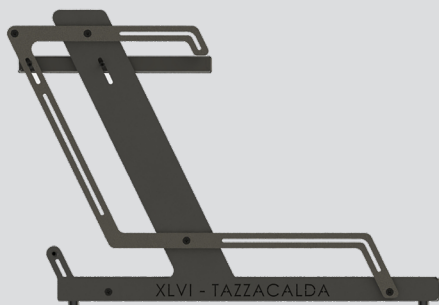
## Product

	2 burners	4 burners
Item code	art. 1500002	art. 1500003
Price	€ 566,00	€ 899,00



# Tazza Calda

**Tazza Calda**, cup warmer with integrated heating element, for those who work with equipment without a cup warmer or need extra space. A simple solution in typical XLVI style.



## Features

Stainless steel  
Integrated heating element

**XLVI**  
COFFEE MACHINES

## Technical features

Net weight	15 Kg
Power	400 W
Voltage	220-240 V
Frequency	50-60 Hz
Dimensions (l x h x p)	61,5 x 38,8 x 50,5 cm

## Product

Item code	art. 1700001
<b>Price</b>	<b>€ 1.300,00</b>

# Grinder

## Technical features

	M1 - 75800	T14 - 75650
Net weight	15 Kg	19 Kg
Power	450 W	720 W
Voltage o Voltage	220-240 V 100-110 V	220-240 V 100-110 V
Frequency	50-60 Hz	50-60 Hz
Dimensions (l x h x p)	20 x 62 x 37 cm	22 x 62 x 37 cm
Cooling fan	upon request	standard
Burr diameter	75 mm	75 mm
Burr material	hardened steel	titanium
Motor RPM	800 g/min	650 g/min
Grinding capacity	3 kg/die	6 kg/die
Grinding time for single espresso	3,2 sec	2,2 sec

## Technology and performance

- Painted steel support structure
- Plastic hopper suitable for food contact
- Spout that delivers coffee directly into the portafilter
- Electrical system compliant with Directive 2006/95/EEC
- Electronic coffee control unit
- Available in white and black
- Available with transparent hopper



**XLVI**  
COFFEE MACHINES

## M1 - 75800

art. 1600030	220-240 V - black	€ 1.398,00
art. 1600031	220-240 V - white	€ 1.398,00
art. 1600032	220-240 V Cooling Fan - black	€ 1.438,00
art. 1600033	220-240 V - white Cooling Fan - white	€ 1.438,00
art. 1600034	100-110 V - black	€ 1.438,00
art. 1600035	100-110 V - white	€ 1.438,00

## T14 - 75650

art. 1600040	220-240 V - black	€ 2.880,00
art. 1600041	220-240 V - white	€ 2.880,00
art. 1600042	100-110 V - black	€ 2.980,00
art. 1600043	100-110 V - white	€ 2.980,00



**XLVI T-shirt** art. 1910006  
Black / White

Size S / M / L / XL / 2XL / 3 XL

Price € 17,00



**XLVI T-shirt** art. 1910006  
Black / White

Size S / M / L / XL / 2XL / 3XL

Price € 17,00



**XLVI T-shirt** art. 1910006  
Black / White

Size S / M / L / XL / 2XL / 3XL

Price € 17,00



**XLVI Sweatshirt** art. 1910037  
Amaranth

Size S / M / L / XL / 2XL / 3XL

Price € 78,00



**XLVI Jacket** art. 1910008  
Black

Size S / M / L / XL / 2XL / 3XL

Price € 158,00



**XLVI Leather travel bag** art. 1910031  
Black

Size grande

Price € 530,00

## Choice of color and size of the garment

Following the article code add:

### Color

**B** for white color

**N** for black color

**A** for amaranth color

**G** for gray color

### Size

**S** for size S

**XL** for size XL

**M** for size M

**2XL** for size 2XL

**L** for size L

**3XL** for size 3XL

Example: **1910006NXL**  
(Black Tshirt size XL)

Example: **1910008N2XL**  
(Black Jacket size 2XL)





**Walnut wood tamper** art. 1900009  
Stainless steel base

Diameter 58 mm  
Price € 70,60

**Walnut wood tamper** art. 1900009  
Black base

Diameter 58 mm  
Price € 93,60



**Black anodized tamper** art. 1900009  
Stainless steel base

Diameter 58 mm  
Price € 77,00

**Black anodized tamper** art. 1900009  
Black base

Diameter 58 mm  
Price € 100,00



**Oak wood tamper** art. 1900009  
Stainless steel base

Diameter 58 mm  
Price € 70,60

**Oak wood tamper** art. 1900009  
Black base

Diameter 58 mm  
Price € 93,60



**Silver anodized tamper** art. 1900009  
Stainless steel base

Diameter 58 mm  
Price € 77,00

**Silver anodized tamper** art. 1900009  
Black base

Diameter 58 mm  
Price € 100,00



**Olive wood tamper** art. 1900009  
Stainless steel base

Diameter 58 mm  
Price € 70,60

**Olive wood tamper** art. 1900009  
Black base

Diameter 58 mm  
Price € 93,60



**Filter cleaning sponge** art. 1900100

Net weight 90 g  
Dimensions (l x h) 30 x 50 cm  
Price € 13,00

## Choice of tamper handle and base

Following the article code add:

### Handle

- A** for silver anodized handle
- AN** for black anodized handle
- N** for walnut wood handle
- R** for oak wood handle
- U** for olive wood handle

### Base

- N** for black base
- I** for stainless steel base

Example: **1900009ANN**  
(Black anodized tamper with black base)

Example: **1900009RI**  
(Oak wood tamper with stainless steel base)



**XLVI Glass 90 cc** art. 1920103  
Double-wall glass

Net weight	90 g
Box	1 pz
Dimensions (l x h x p)	7,2 x 8 x 7,2 cm
<b>Price</b>	<b>€ 10,00</b>



**XLVI Glass 180 cc** art. 1920100  
Double-wall glass

Net weight	150 g
Box	1 pz
Dimensions (l x h x p)	9 x 10 x 9 cm
<b>Price</b>	<b>€ 12,00</b>



**XLVI Glass 300 cc** art. 1920101  
Double-wall glass

Net weight	208 g
Box	1 pz
Dimensions (l x h x p)	10,2 x 11,6 x 10,2 cm
<b>Price</b>	<b>€ 13,00</b>



**XLVI Glass 450 cc** art. 1920102  
Double-wall glass

Net weight	271 g
Box	1 pz
Dimensions (l x h x p)	10,8 x 14 x 10,8 cm
<b>Price</b>	<b>€ 13,00</b>



**Espresso cup XLVI** art. 1920001

Net weight	1600 g
Box	6 pz
Dimensions (l x h x p)	14,1 x 11,8 x 26 cm
<b>Price</b>	<b>€ 50,00</b>



**Cappuccino cup XLVI** art. 1920002

Net weight	4000 g
Box	6 pz
Dimensions (l x h x p)	24,1 x 12,6 x 35,8 cm
<b>Price</b>	<b>€ 78,00</b>



**XLVI wooden tray** art. 1930001  
**Carved wooden tray**

Net weight	810 g
Dimensions (l x h x p)	33 x 3 x 23,5 cm
<b>Price</b>	<b>€ 52,00</b>



**XLVI wooden moka tray** art. 1930002  
**Wooden tray with carved Moka holder**

Net weight	700 g
Dimensions (l x h x p)	33 x 3 x 23,5 cm
<b>Price</b>	<b>€ 70,00</b>



**XLVI wooden tray** art. 1930004  
**Wooden tray for quick refill**

Net weight	830 g
Dimensions (l x h x p)	34 x 5 x 14,5 cm
<b>Price</b>	<b>€ 75,00</b>



**XLVI Top coffee maker** art. 1930020  
**Aluminium**

3 cup	
<b>Price</b>	<b>€ 40,00</b>

Item code	Name	Model	Specifications	Price
1100001	XLVI Steamhammer	Leva / manual	1 group	€ 4.084,00
1100002	XLVI Steamhammer	Leva / manual	2 groups	€ 5.202,00
1100003	XLVI Steamhammer	Leva / manual	3 groups	€ 6.000,00
1100004	XLVI Steamhammer	Elettronica	1 group	€ 5.144,00
1100005	XLVI Steamhammer	Elettronica	2 groups	€ 6.434,00
1100006	XLVI Steamhammer	Elettronica	3 groups	€ 7.486,00
1100007	XLVI Steamhammer	Cattiva	1 group	€ 6.098,00
1100008	XLVI Steamhammer	Cattiva	2 groups	€ 7.319,00
1100009	XLVI Steamhammer	Cattiva	3 groups	€ 8.308,00
1100010	XLVI Sth9	Elettronica multiboiler	1 group	€ 4.499,00
1100011	XLVI Sth9	Elettronica multiboiler	2 groups	€ 9.724,00
1100012	XLVI Sth9	Elettronica multiboiler	3 groups	€ 11.241,00
1120001	Indipendente	Espresso coffee station		€ 4.260,00
1150005	55 Volante	Elettronica multiboiler / multisteam	2 groups	€ 15.590,00
1150006	55 Volante	Elettronica multiboiler / multisteam	3 groups	€ 16.870,00
1160002	K7	Elettronica multiboiler	2 groups	€ 3.900,00
1200001	Azomico	1 Silos + Support structure (wall-mounted or countertop)		€ 3.996,00
1200002	Azomico	2 Silos + Support structure (wall-mounted or countertop)		€ 7.992,00
1200003	Azomico	3 Silos + Support structure (wall-mounted or countertop)		€ 11.998,00
1200004	Azomico	4 Silos + Support structure (wall-mounted or countertop)		€ 15.984,00
1300001	Banco Macchina	XL27 Banco bar completo		variable price
1300002	Banco Macchina	XL27 Modulo da incasso		€ 10.530,00
1300006	Banco Macchina	XL27 Modulo da vestire		€ 11.700,00

Item code	Name	Model	Price
1300008	Colonna vapore		€ 2.457,00
1300009	Colonna acqua		€ 1.638,00
1300010	Macchinario Sottobanco	Small	€ 2.500,00
1300011	Macchinario Sottobanco	Medium	€ 3.000,00
1400001	Metal Workstation	70 cm for 2 groups machine	€ 6.000,00
1400002	Metal Workstation	90 cm per 3 groups machine	€ 6.200,00
1500001	Banco Moka	7 burners (custom)	variable price
1500004	Banco Moka	4 burners (custom)	variable price
1500002	Fornello Moka	2 burners	€ 566,00
1500003	Fornello Moka	4 burners	€ 899,00
1600030	On-demand XLVI grinder	M1-75800 (220/240 V) - black	€ 1.398,00
1600031	On-demand XLVI grinder	M1-75800 (220/240 V) - white	€ 1.398,00
1600032	On-demand XLVI grinder	M1-75800 (220/240 V) - Cooling fan - black	€ 1.438,00
1600033	On-demand XLVI grinder	M1-75800 (220/240 V) - Cooling fan - white	€ 1.438,00
1600034	On-demand XLVI grinder	M1-75800 (100/110 V) - black	€ 1.438,00
1600035	On-demand XLVI grinder	M1-75800 (100/110 V) - white	€ 1.438,00
1600040	On-demand XLVI grinder	T14-75650 (220/240 V) - black	€ 2.880,00
1600041	On-demand XLVI grinder	T14-75650 (220/240 V) - white	€ 2.880,00
1600042	On-demand XLVI grinder	T14-75650 (100/110 V) - black	€ 2.980,00
1600043	On-demand XLVI grinder	T14-75650 (100/110 V) - white	€ 2.980,00
1700001	Tazza calda		€ 1.300,00
1700002	Tazza calda for Indipendente	1 group	€ 1.170,00
1700003	Tazza calda for Indipendente	2 groups	€ 1.268,00
1700004	Tazza calda for Indipendente	3 groups	€ 1.357,00

Item code	Name	Price
1900009	Black anodized tamper with stainless steel base	€ 77,00
1900009	Black anodized tamper with black base	€ 100,00
1900009	Silver anodized tamper with stainless steel base	€ 77,00
1900009	Silver anodized tamper with black base	€ 100,00
1900009	Walnut wood tamper with stainless steel base	€ 70,60
1900009	Walnut wood tamper with black base	€ 93,60
1900009	Oak wood tamper with stainless steel base	€ 70,60
1900009	Oak wood tamper with black base	€ 93,60
1900009	Olive wood tamper with stainless steel base	€ 70,60
1900009	Olive wood tamper with black base	€ 93,60
1900100	Filter cleaning sponge 30 x 50 cm	€ 13,00
1930001	XLVI wooden tray	€ 52,00
1930002	XLVI Moka wooden tray	€ 70,00
1930004	XLVI quick refill wooden tray	€ 75,00
1930020	Aluminium XLVI Top coffee maker	€ 40,00

Item code	Name	Price
1920103	XLVI Double-wall glass 90 cc	€ 10,00
1920100	XLVI Double-wall glass 180 cc	€ 12,00
1920101	XLVI Double-wall glass 300 cc	€ 13,00
1920102	XLVI Double-wall glass 450 cc	€ 13,00
1920001	XLVI espresso cup (6 tazze)	€ 50,00
1920002	XLVI cappuccino cup (6 tazze)	€ 78,00
1910031	XLVI leather travel bag	€ 530,00
1910006	T-Shirt XLVI	€ 17,00
1910037	XLVI sweatshirt	€ 78,00
1910008	XLVI jacket	€ 78,00



**XLVI**  
COFFEE MACHINES